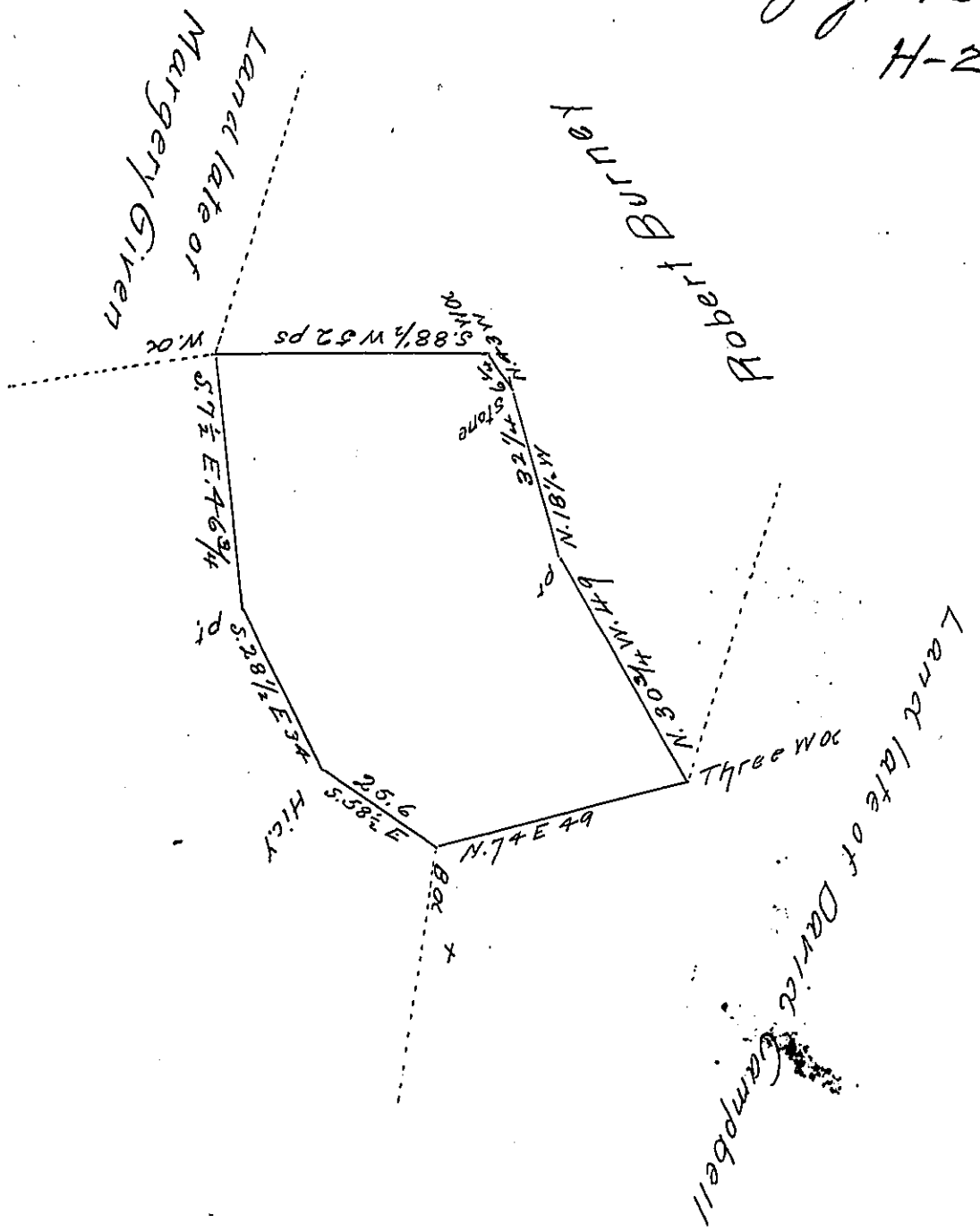


See pg. 175 & 181
H-213



A Draught of a piece or Tract of Land Situate in Colerain Township Lancaster County containing 31^{ac} & 61 ps. and the Usual Allowance of six p Cent for Roads &c. surveyed the 31st Day of March A.D. 1803 for Christian Bear in Right of Robert Burney (It being part of a Larger Tract of 134^{ac} & 95 ps and Allowance. formerly surveyed unto the said Robert Burney By Virtue of a Warrant Dated the 3^d Day of April A.D. 1753 - pr

H. Ream D. Sr

J. Saml. Ensminger D.S

To Samuel Gochran Esq.

Surveyor General

IN TESTIMONY that the above is a copy of the original remaining on file in the Department of Internal Affairs of Pennsylvania, made conformably to an Act of Assembly approved the 16th day of February, 1833, I have hereunto set my Hand and caused the Seal of said Department to be affixed at Harrisburg, this thirty first day of October 1904

Loac B Brown
Secretary of Internal Affairs.